

PART OF N.E. 1/4 OF SEC. 36, T.6N., R.2W., S.L.B.&M. 125

OGDEN COMMERCIAL & INDUSTRIAL PARK-PLAT 'A'

TAXING UNIT: 25

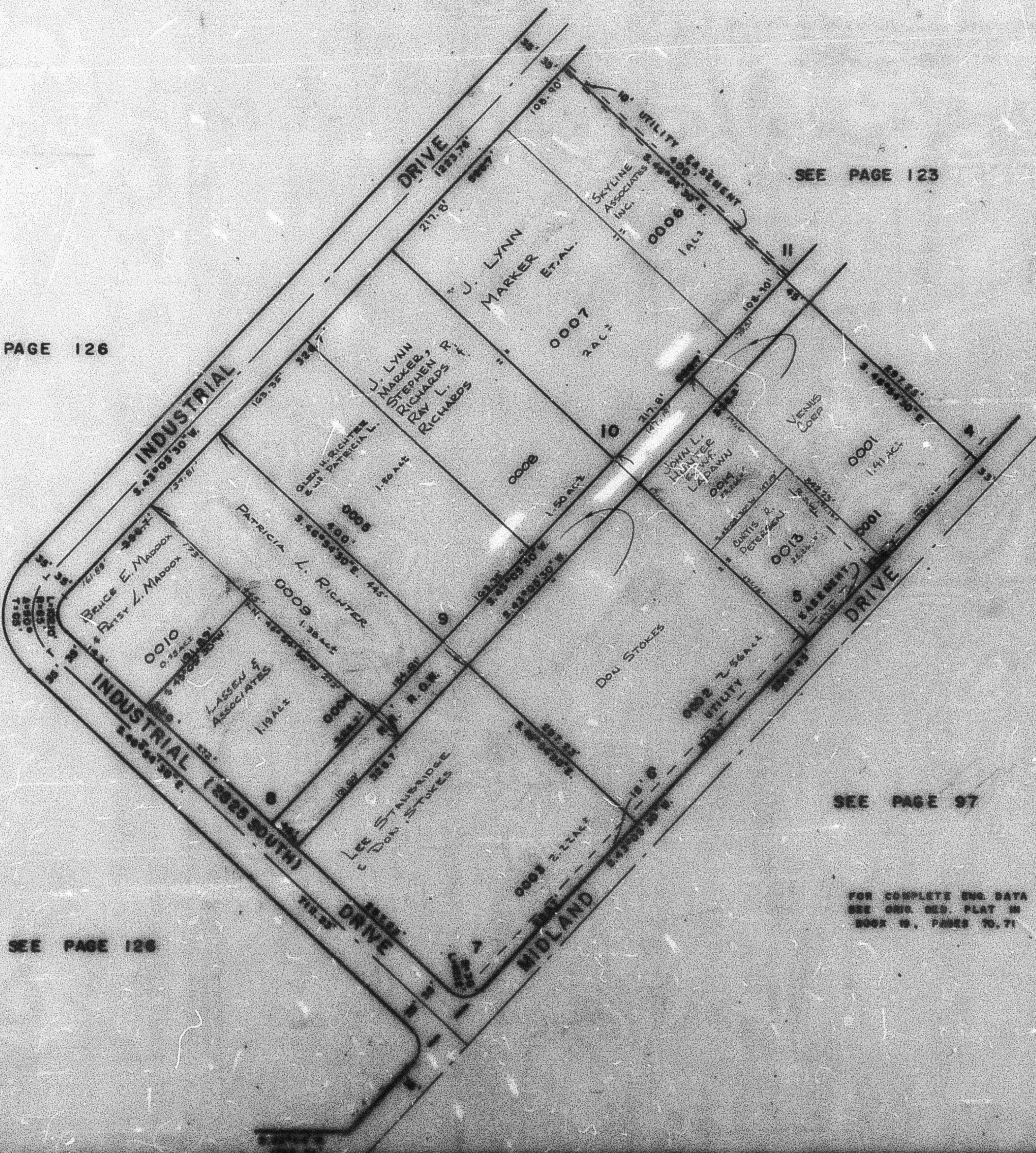
LOTS 5-10
IN OGDEN CITY
SCALE 1"=100'

PREFIX: 15-125

SEE PAGE 126

SEE PAGE 123

SEE PAGE 97



SEE PAGE 126

FOR COMPLETE ENG. DATA
SEE ORIG. DES. PLAT IN
BOOK 19, PAGES 70, 71